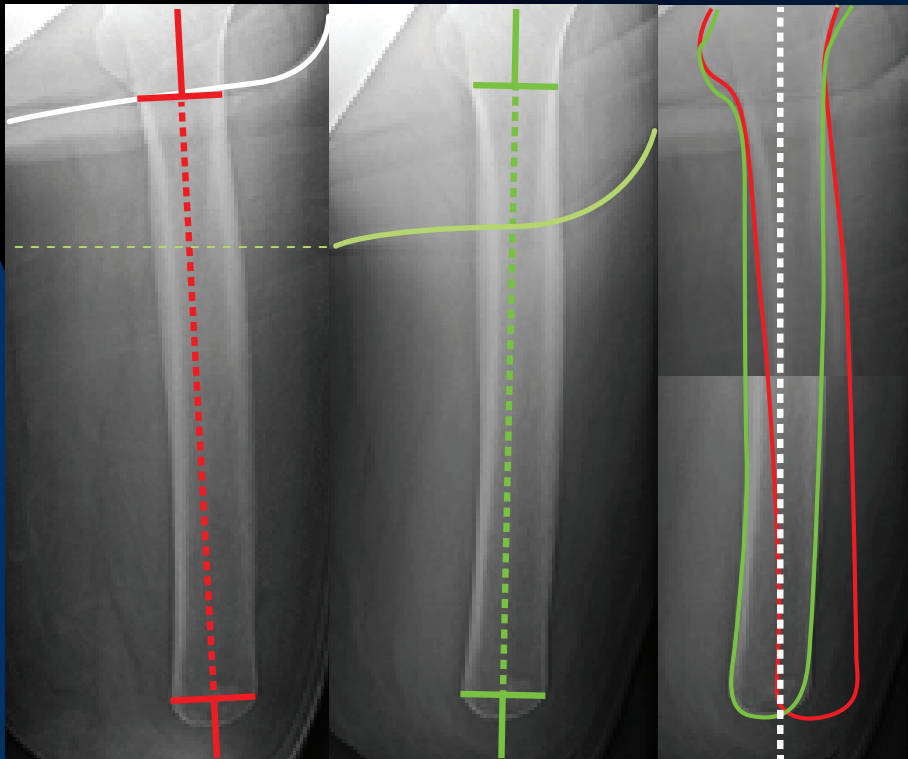


SEE US AT BOOTH 1475 IN VEGAS

We can't control rac audits or reimbursement, but now we CAN control the bone



Femur in ischial containment socket, patient standing equally weighted, abducted.

Femur in sub-ischial HiFi Interface, patient standing equally weighted, abducted.

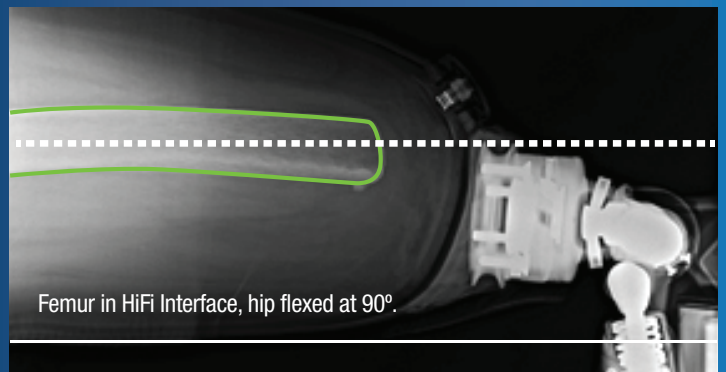
Comparison shows improved bone position

We were taught sockets can't adequately control the femur and that was true... until now. The **HiFi™ Interface System** with patented technology allows you to achieve bone stabilization and control, like never before, and significantly lower trim lines. Become trained and licensed in the HiFi Transfemoral Interface System, the most biomechanically advanced design available.

Call us today to register
for our upcoming trainings.

Thursday, Sept. 4 • Las Vegas, NV
European training dates coming soon.

800.775.2870



Femur in HiFi Interface, hip flexed at 90°.

 **biodesigns**
maximizing human performance

HiFi
INTERFACE SYSTEM

For more information, visit
www.JoinHiFi.com / www.biodesigns.com
P/F 800.775.2870 • HiFi@biodesigns.com

Follow biodesigns & HiFi    

Watch our webinar, "Achieving Femoral Stabilization..."
at www.oandp.org/olc/webinars/ for 1.5 credits.